

# Ministry of Agriculture and Forestry

steers the policy on  
the sustainable use  
of natural resources

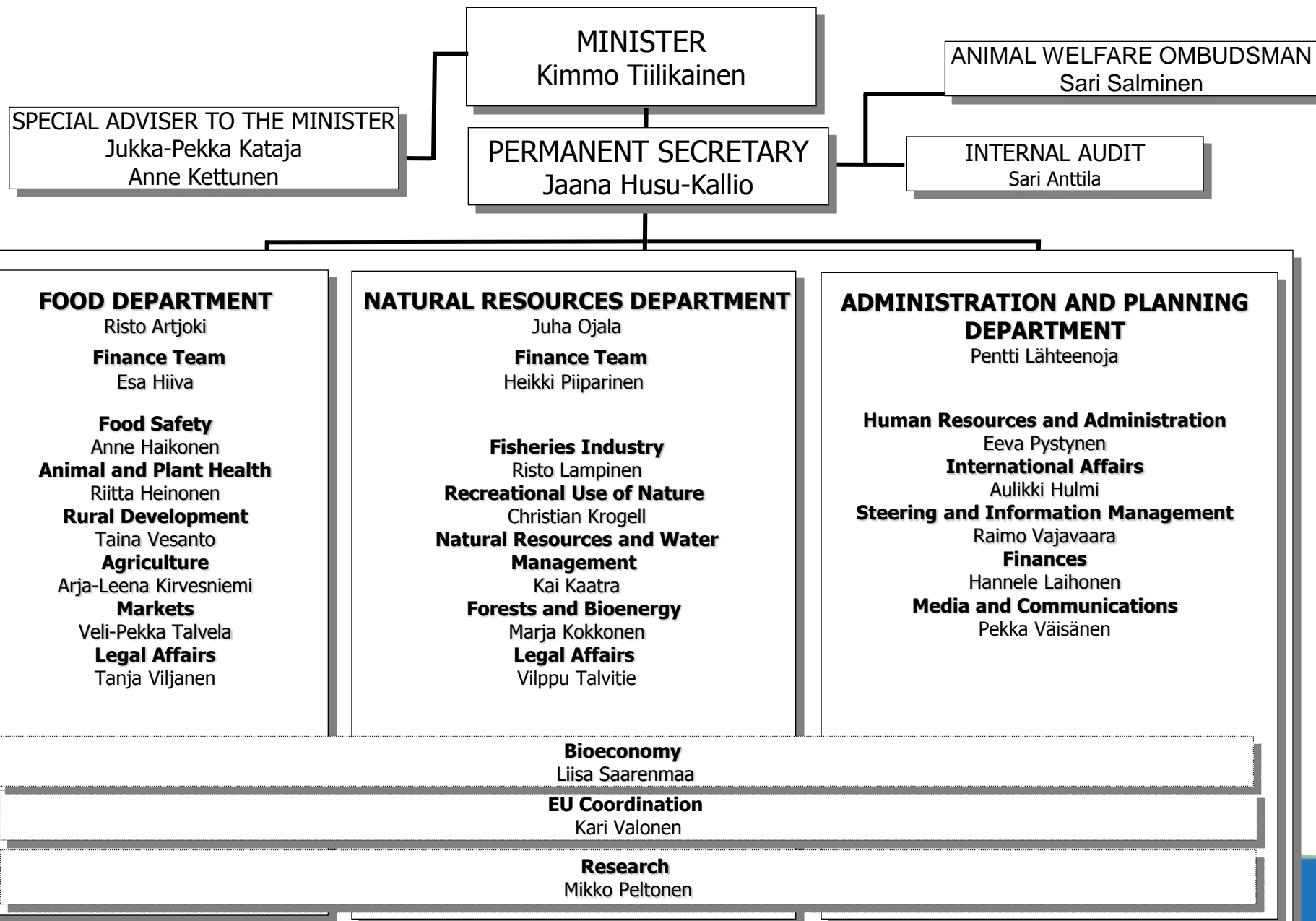


# Mission statement and vision

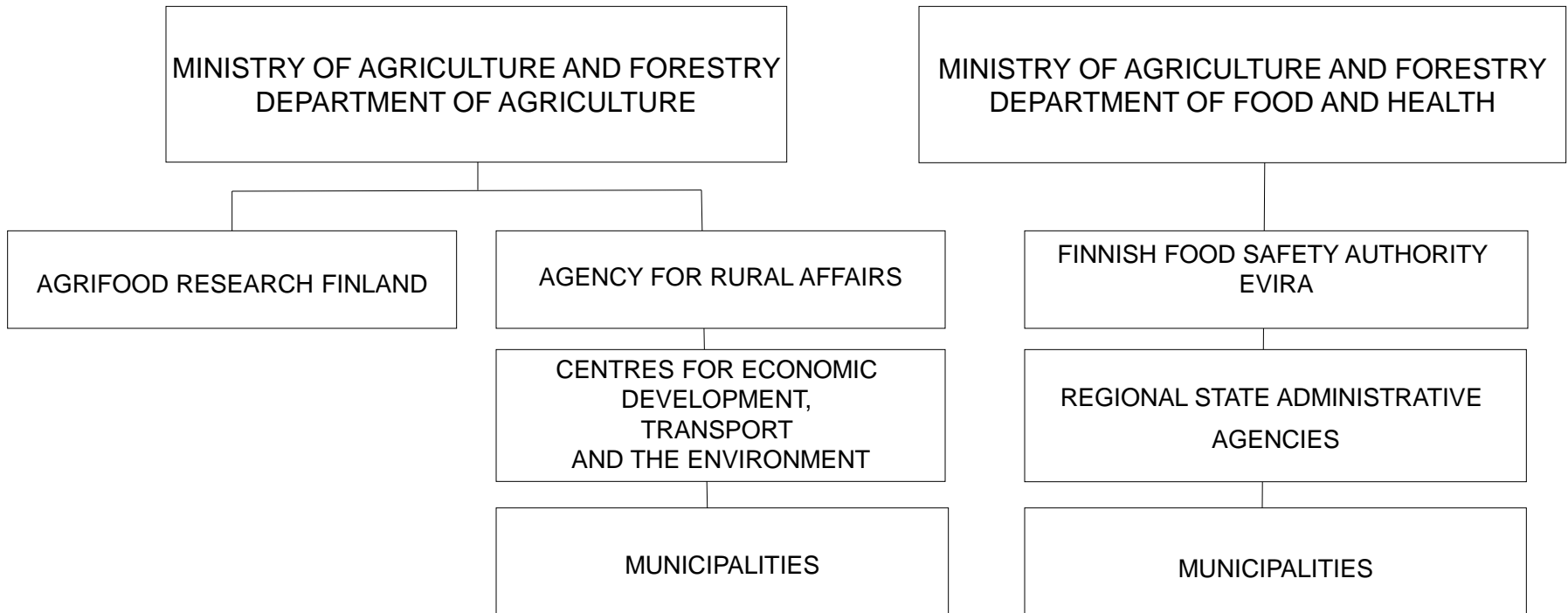
- Mission statement: the Ministry of Agriculture and Forestry steers the policy on the sustainable use of natural resources as part of the Finnish Government and the EU institutions and decision-making
- Vision: Finland is a society which utilises renewable natural resources in a sustainable, diversified and efficient way where people and nature are doing well



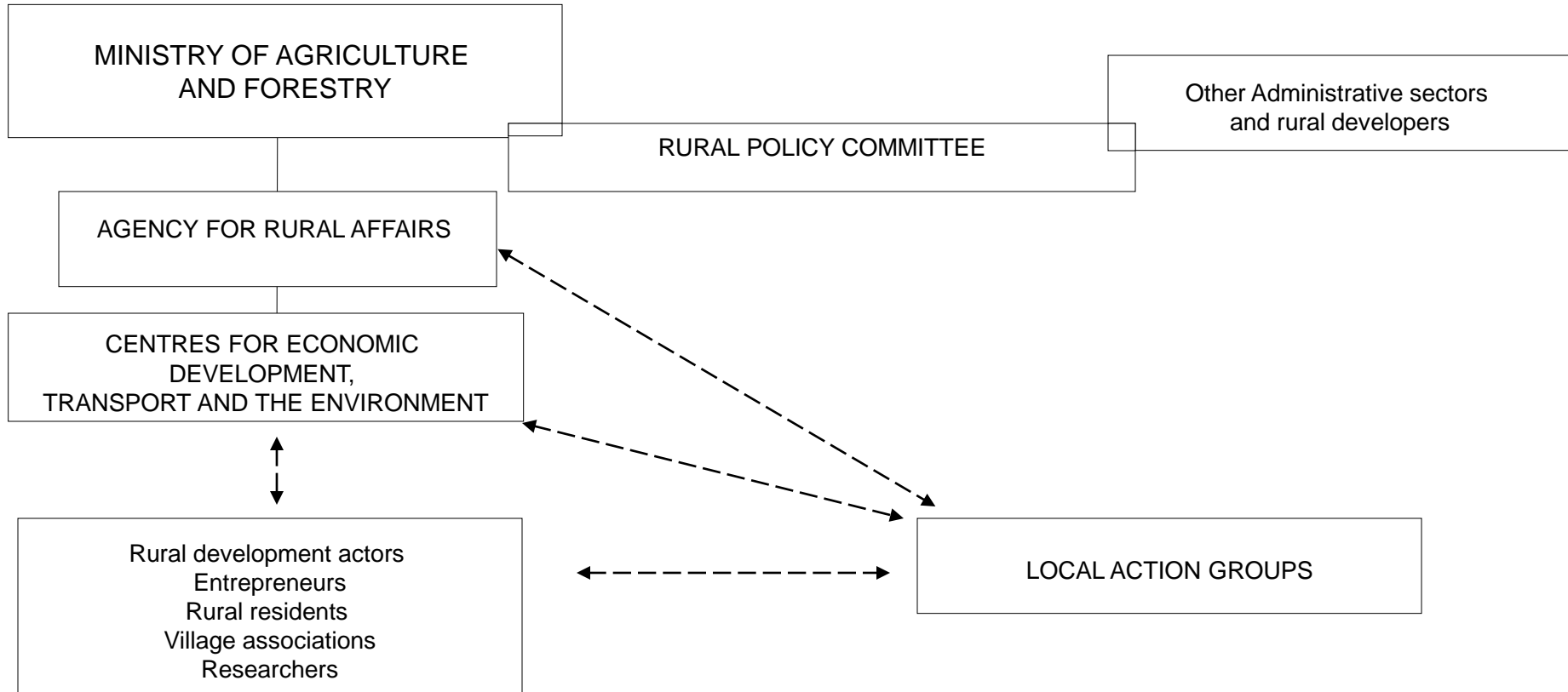
# Departments and units of the Ministry of Agriculture and Forestry



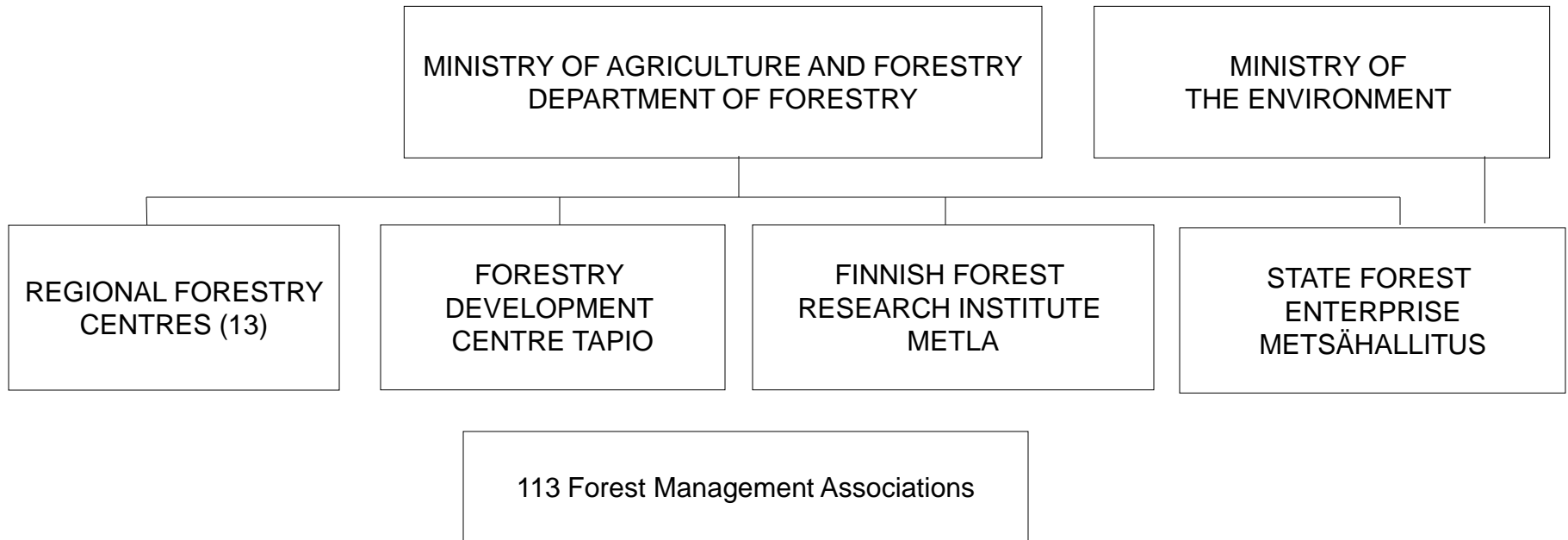
# Administration of the agricultural and food sector



# Administration of rural policy



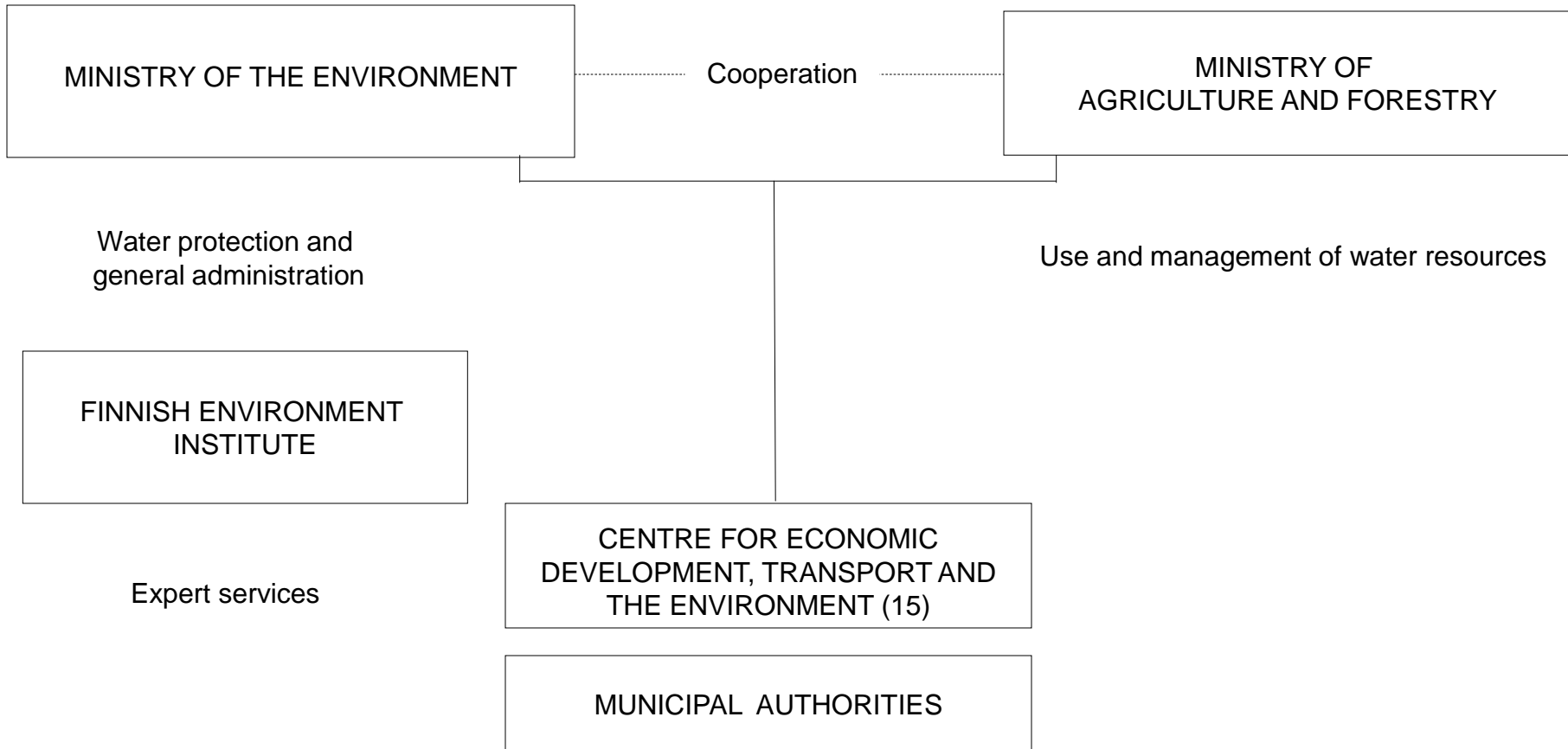
# Forest administration



# Fisheries and game administration



# Water administration





# Main policy sectors

- Rural development
- Agriculture
- Food safety and quality
- Fisheries, game and reindeer husbandry
- Water resources management
- Forestry
- Real Estate and Spatial Data Infrastructure (SDI)



# Rural development

- viability of the rural areas is maintained in a sustainable way
- focus on sparsely populated rural areas and rural heartland areas
  - balancing the population trends
  - improving employment
  - diversification of economic activities



# Agriculture

- agricultural production continues in all parts of Finland
- production of high-quality raw materials for the domestic food industry
- ensuring the profitability of agriculture
- reducing nutrient loading from agriculture
- increasing agriculture-based energy production



# Food safety and quality

- maintaining animal and plant health
- maintaining safety and quality of agricultural inputs
- improving animal welfare
- reducing the incidence of food-borne diseases and zoonoses
- keeping the incidence of contaminants in food at the current, very low level
- securing the reliability of labelling of origin and production method
- controlled introduction and use of GMO products



# Fisheries, game and reindeer husbandry

- sustainable and diverse utilisation of fish and game populations
- improving the profitability of the fisheries industry
- promoting sustainable recreational fishing
- efficient, goal-oriented and methodological management of fish resources
- reducing damages caused by game animals
- improving the profitability of reindeer husbandry based on the sustainable use of reindeer pastures



# Water resources management

- socially, economically and ecologically sustainable water services
- high usability of waters and risk management, also in exceptional water situations
- improving regional cooperation in water supply and services, preparation for exceptional circumstances and water supply in the rural areas
- influencing decisions on communal policies  
→ sustainability in managing flood risks and ensuring access to vital water supply services



# Forestry

- maintaining a high utilisation rate of wood produced in forests
- maintaining a good status of wood production in forests
- preserving the biological diversity of forests
- improving the profitability of forestry



# Real Estate and Spatial Data Infrastructure (SDI)

- ensuring access to information on land ownership, real estates and topography by means of a Real Estate and Topographic Information System
- nationwide, comprehensive, up-to-date and high-quality information and services  
→ aim to facilitate everyday life of citizens, promote efficient administration and enhance the competitiveness of industries
- more efficient cooperation between organisations which maintain geographic information and reducing overlaps in data collection





# Organizations in the administrative sector and their workforce (AWU)

- Ministry of Agriculture and Forestry (300)
- Finnish Food Safety Authority Evira (760)
- Finnish Geodetic Institute (50)
- Agrifood Research Finland MTT (870)
- Information Centre of the Ministry of Agriculture and Forestry Tike (220)
- National Land Survey of Finland (1800)
- Agency for Rural Affairs Mavi (200)
- Finnish Wildlife Agency (60)
- Metsähallitus (State forest enterprise) (2000)
- Regional Forestry Centres (1200)
- Finnish Forest Research Institute Metla (770)
- Forestry Development Centre Tapio (90)
- Finnish Game and Fisheries Research Institute (320)
- Finnish Environment Institute (370, of which 35 in water resources tasks of the Ministry)
- Centres for Economic Development Transport and the Environment (1900, of which 830 in tasks of the Ministry)
- Regional State Administrative Agencies (1340, of which 200 in water resources tasks of the Ministry)



# Finnish Food Safety Authority Evira

- ensures the safety of foodstuffs
- promotes animal health and welfare
- ensures the standard of agricultural production
- carries out scientific research (incl. diagnostics of animal diseases and food and feed analytics)
- conducts scientific risk assessments on the food chain



# Finnish Geodetic Institute

- manages the basic scientific measurements for Finnish mapping and the metrology of geospatial information
- manages the measurements of the core reference points and the national gravity network
- maintains the network of permanent GPS stations in Finland (FinnRef)
- carries out scientific research work in the fields of geodesy, geoinformatics, remote sensing, navigation, and related sciences



# Agrifood Research Finland MTT

promotes, by means of research

- the welfare of consumers
- competitiveness of agriculture, food economy, and energy supply
- sustainable and diversified use of natural resources
- quality of the production environment and rural environment
- regionally balanced development, viability of the rural areas and urban-rural interaction



# Information Centre of the Ministry of Agriculture and Forestry Tike

- produces reliable and up-to-date information on the state and changes in agriculture, rural areas and rural environment
- provides efficient and reliable information system services for the administration



# National Land Survey of Finland

- produces and distributes information and services about real estate, topography and the environment
- carries out real estate surveys and land consolidation projects
- maintains and develops the National Cadastre, Land Information System, and related information service
- maintains the national topographic database and publishes national basic maps
- develops the interoperability of geographic information data sets and national spatial data infrastructure as a whole



# Agency for Rural Affairs Mavi

- manages the implementation of support payments to farmers, financial and development aid in rural areas and market support.
- functions as the Finnish Paying Agency
- manages the use of agricultural support and rural funds in Finland



# Finnish Wildlife Agency

- maintains game populations on a level which allows hunting
- ensures the continuity of hunting
- promotes the public image of hunting





# Metsähallitus

## (State forest enterprise)

- administers 12 million hectares of State-owned lands and waters (= about 1/3 of the surface area of Finland)
- manages and uses the areas so that they benefit the Finnish society in the best possible way
- sees to the management of nature conservation, hiking and wilderness areas and trade and emergency storage of forest tree seeds and promotes the conservation and recreational use of nature on State lands and waters



# Regional Forestry Centres (13)

- promote sustainable forestry through modern forest information and advisory services
- ensure the wood production capacity of peatland forests
- manage the transport routes and connections for forestry purposes
- see to the implementation of forest legislation



# Finnish Forest Research Institute Metla

- promotes through research the sustainable management and use of forests
- produces, acquires, and disseminates high-standard scientific information on forest-related topics including:
  - forest ecosystems
  - various types of forest use
  - forest resources, their utilisation and protection



# Forestry Development Centre Tapio

- produces expert and development services for sustainable forestry
- makes proposals and motions to improve the operating conditions of forestry
- transmits research information to forestry in practice
- produces seed for forest seeding and nurseries



# Finnish Game and Fisheries Research Institute

- studies the sustainable and diverse utilisation of fish and game resources
- estimates and forecasts fish and game resources and compiles statistics on these
- reinforces research and service production that contributes to the profitability and diversification of economic activities in the sector
- produces information in support of the prevention of damages caused by moose, large carnivores and seals
- promotes the sustainable use of reindeer pastures



# Centres for Economic Development, Transport and the Environment (15)

## Rural Departments

- finance machinery, land, building and environmental investments of farms
- support entrepreneurship in rural areas
- develop the countryside through various projects

## Fishery Units

- ensure the prerequisites for fisheries industry and recreational fishing



# Finnish Environment Institute (SYKE)

- studies the state of the environment and changes in this
- devises solutions to environmental problems
- develops the use and management of water resources and monitors the water situation



# Regional State Administrative Agencies (6)

(one in each of the five provinces in mainland Finland and one in the Province of Åland)

- see to the control and licences relating to animal welfare and combating infectious animal diseases
- plan, steer and supervise the implementation of health protection, food control and product safety
- inspect food production establishments





# Thank you!

