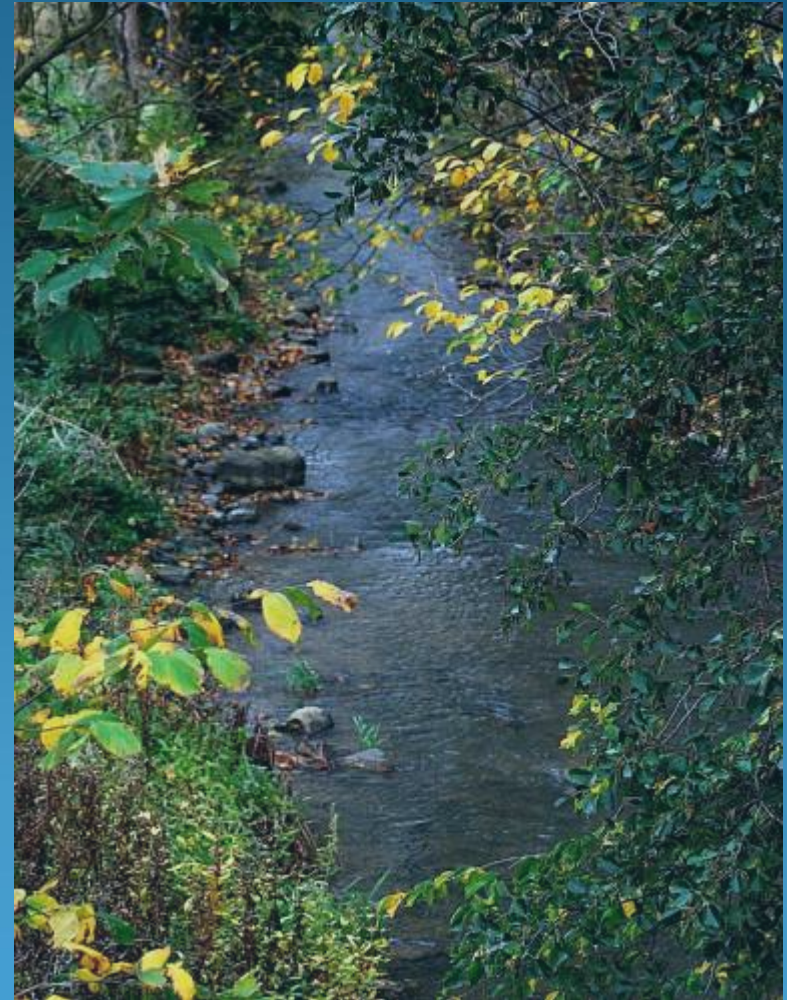


Tullstorp Stream Project

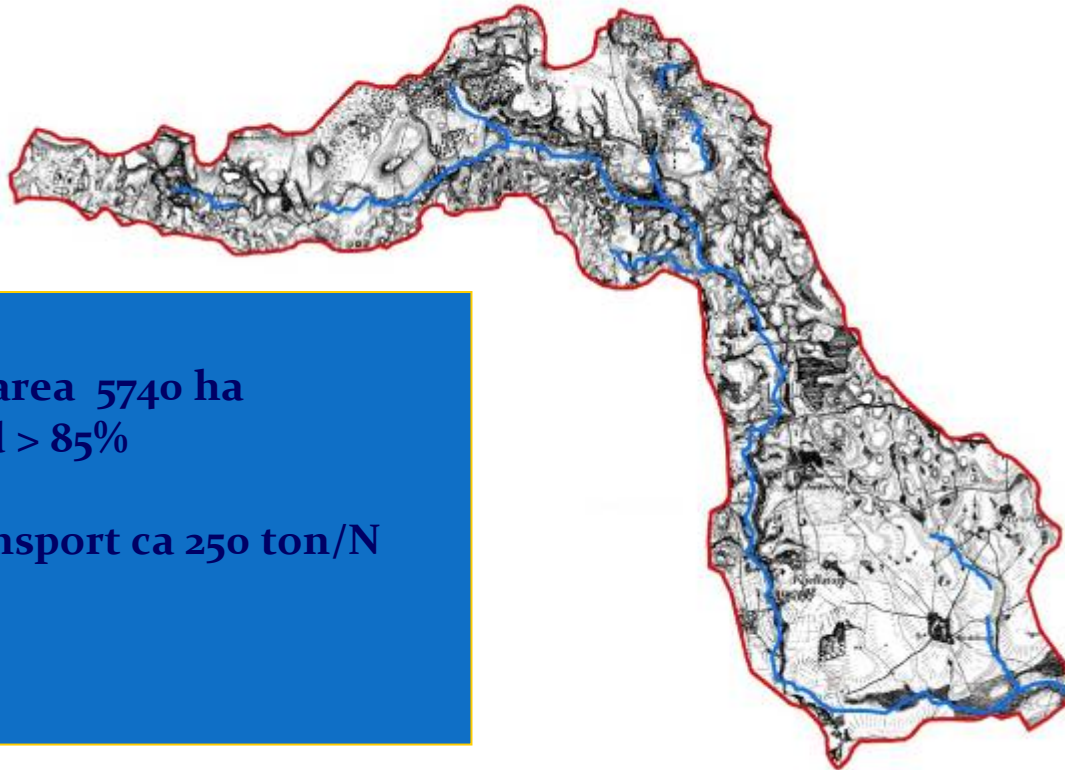
Helsinki
28-29 september 2011

Water Management In and around the Tullstorp Stream

Otto von Arnold
Chairman
Member of Swedish Parliament



Welcome to the Tullstorp Stream Project



Catchment area 5740 ha
Arable land > 85%

Annual transport ca 250 ton/N
4 ton/P

Jordberga September 22 2009

Where

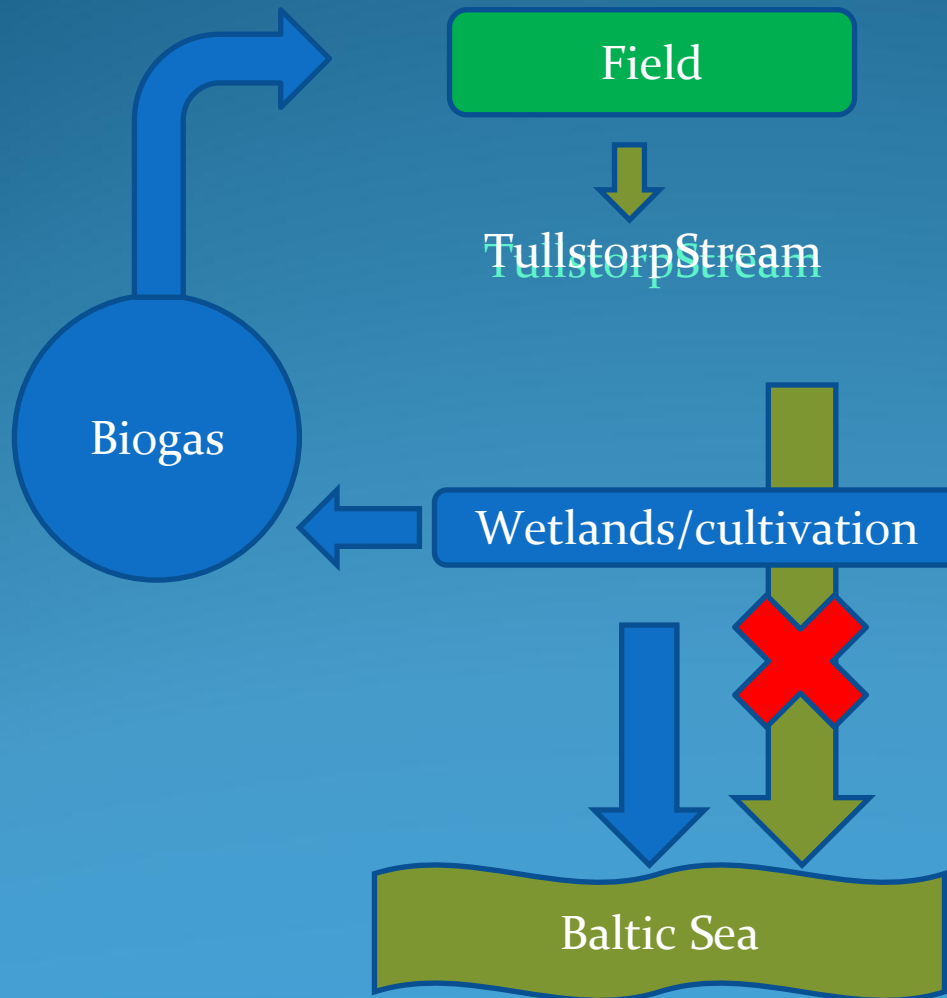
Tullstorp stream



Background

- Landowner driven project
- Minimize Leach of nutrients to the Baltic Sea
- EU:s Strategy for the Baltic Sea
- Swedens Strategy for the Baltic Sea
- The Recycling Project of Trelleborg
 - Collection of marine algae
 - Independence of Fossil fuels : BIO GAS
 - Absorb & use important (N, P) Restoration of streams.

Tullstorp Stream Project



How we do it:

- Land owner driven cooperative.
- Financing 100 %
- In return let the association dispose agricultural land
- Minimize the leakage of nitrogen and phosphorus from the cultivated land.
- Without reducing the economical and agricultural yield
- Bottom –Up Approach
- Budget on 12 million €

Obectives

- Make the Baltic sea cleaner
- Mitigate erosion and flooding
- Reduce need for clearing out the stream
- Recreate valuable fish community
- Promote Biodiversity
- Promote coopeation betwwen landowners and others
- Attain Good Water Status (Water Frame Directive)

Reduction of pollution to the Baltic sea

Nitrogen:

reduction of 30%
/year 80 ton

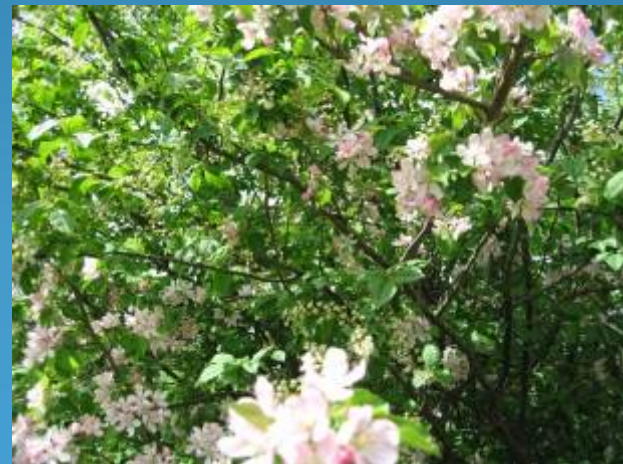
Phosphorus

reduction 52% /year
2,1 ton



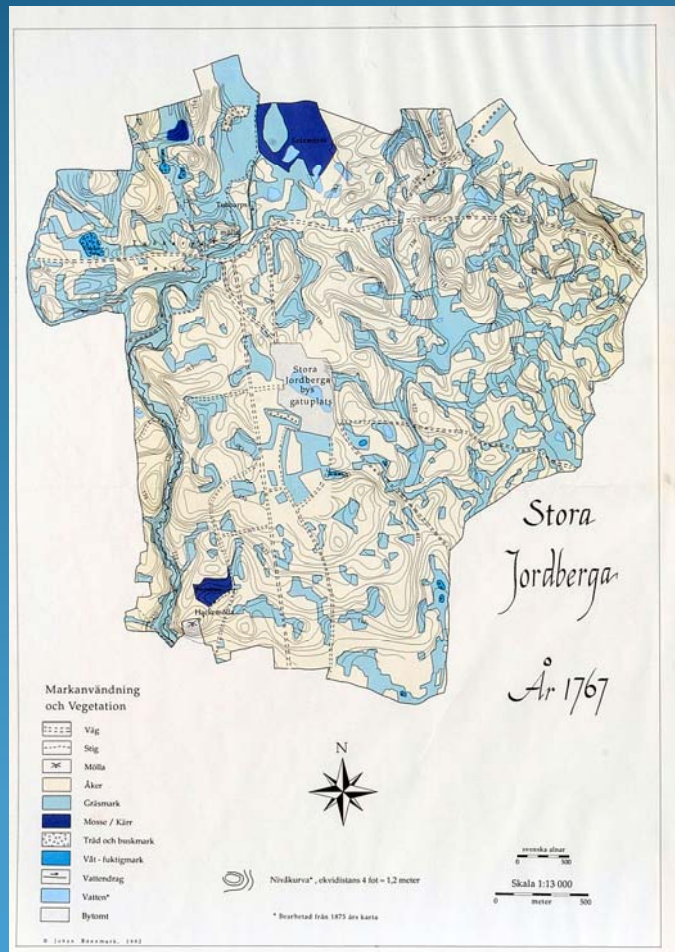
Objectives Biology

- Increased Biodiversity
- Good ecological status
- ❖ Over 50 new wetland areas as a string of pearls along the stream
 - 200 ha wetland area
 - 80 ha water area
- ❖ A restored stream
 - Meander
 - Areas for inundation
 - Tree plantations
 - Water, Fish and Wildlife measures



Demonstration area

Jordberga – Hackemölla: Summer - Autumn 2009



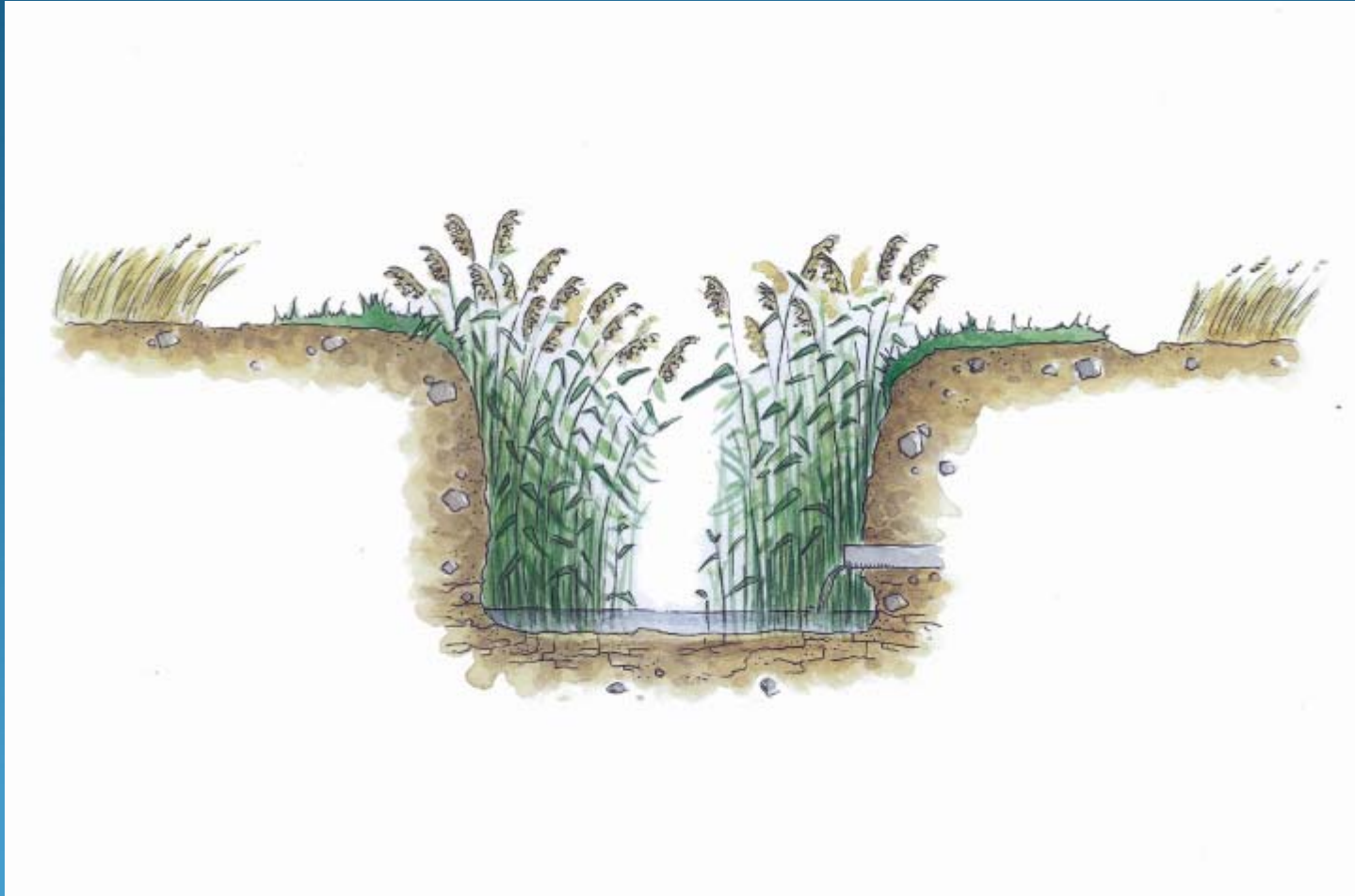
- Wetland
- Re-meandering
- Flooding areas
- Leveling of banks
- Tree planting
- Fish
- Analyze Cultural landscape
- Information



Tullstorp stream 28/12 09



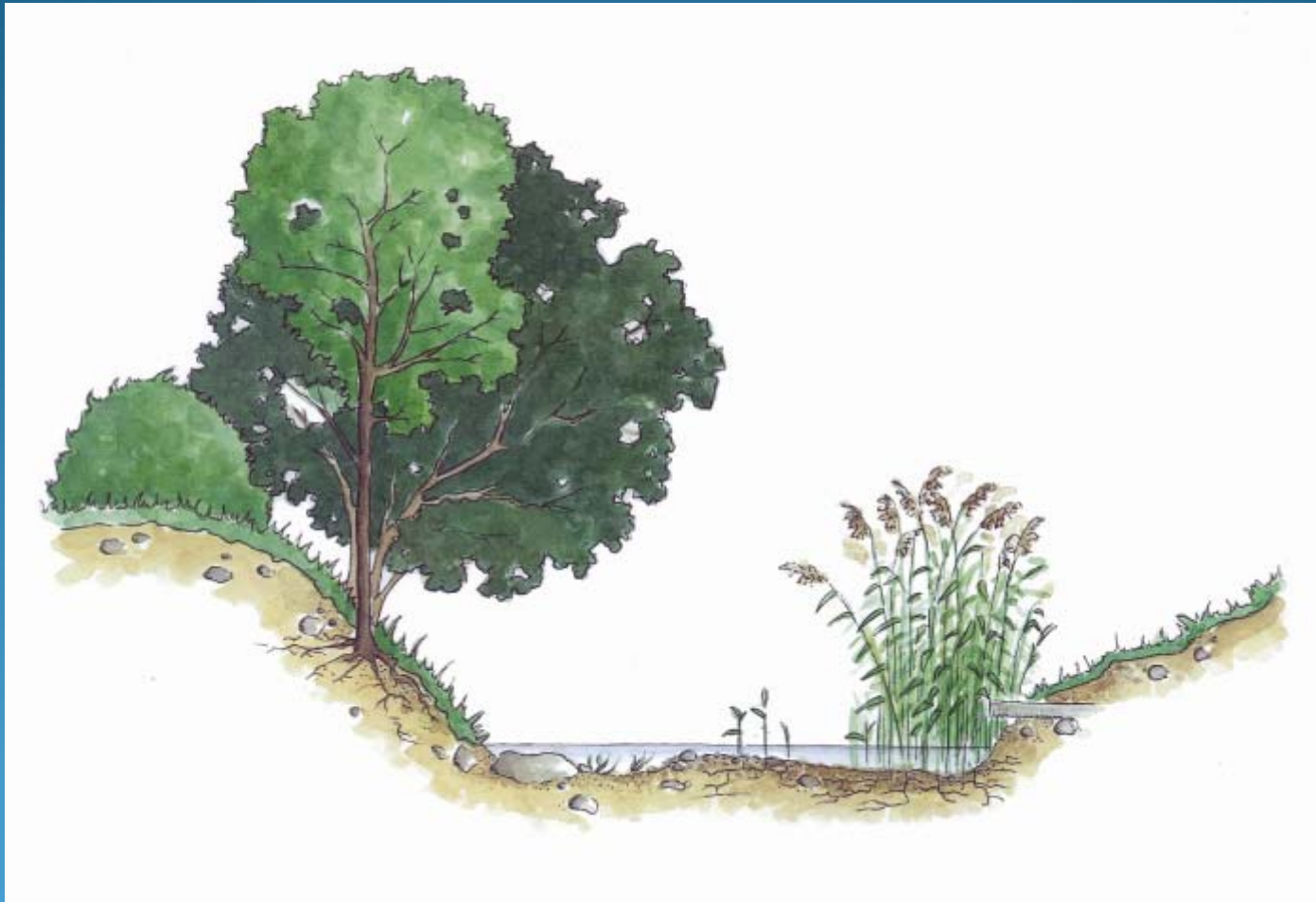
Before



Before



After





Stream area









The Demonstration Part

Planting of Trees and shrubs





Demonstration part Information



Demonstration Part



Conclusions of the project

- The motivation and engagement at local level, of the local landowners and NGO:s, municipality
- Dedicated board members
- Take total grip on: environment, pollution, agriculture, history etc..
- Show that investment in the environment is profitable
- Have a creative approach towards Legislation
- .. which gives possibilities for good Financing
- The models for N & P are inadequate

What to do better

- EU legislation
- Models to calculate and show the profit for the landowner in environmental terms.
- The operational cost of loss biodiversity bad environment
- Close cooperation with researchers

Thank You!!



www.tullstorpsan.se